



PRODUCT CATALOGUE



ABOUT ECO SOLAR LIGHTING

Eco Solar Lighting is a division of Service Division Australia (SDA), delivering one of Australia's most comprehensive ranges of solar lighting solutions for residential, commercial, industrial, and government applications.

We specialise in the supply of high-quality, sustainable solar lighting products designed to reduce environmental impact and combat rising energy costs. Our range is built for performance, durability, and efficiency across a wide variety of uses.

Our solar lighting solutions are ideal for:

- Street and roadway lighting
- Bollard and pathway illumination
- Car parks, bike paths, and walkways
- Marinas and landscaped areas
- Gateways, apartment complexes, and safety zones
- DIY projects, mobile setups, and night lighting

As part of SDA, Eco Solar Lighting combines technical expertise with a strong commitment to innovation and environmental responsibility. Explore our product categories below to find the right solution for your project.



WHY ECO SOLAR LIGHTING



Professional Support

The Eco Solar Lighting team offers the highest level of professional and technical support, both before and after sales. We are well trained and experienced in high-quality solar lighting and solar power systems, ready to provide you with competitive pricing and a reliable, quality product. The Eco Solar Lighting team is passionate, committed, and customer service driven.



Innovative Products

Eco Solar Lighting are constantly updating and improving their products to ensure we present you with the best new technologies as they emerge. We are motivated and inspired by how our valued customers use our products to find creative solutions with solar lighting options.











Reliable Solutions, Real Results

At Eco Solar Lighting, we pride ourselves on delivering practical, sustainable lighting solutions that are built to last. Whether it's for public spaces, commercial sites or residential use, our systems are designed with durability, efficiency and the Australian climate in mind. When you choose ESL, you're choosing innovation, reliability, and a team that genuinely cares about your project's success.



CONTENTS

-  All in One Solar Street Lights
-  Solar Lawn / Bollard Lights
-  Solar Pedestrian Lights
-  Solar Canopy Lights
-  Solar Flood Lights
-  All in Two Solar Street Lights
-  Vertical Solar Module
-  Lithium Battery Cylinder





MILIO

AIO Solar Street Light

The MILIO Series is a compact, premium solar street light for poles 3 to 6 metres high. It features a durable die-cast aluminium housing and an advanced MPPT solar controller for efficient energy use. With an integrated A-grade LiFePO4 battery, it delivers reliable, long-lasting performance—ideal for pathways, residential streets, parks, and gardens.

Applications

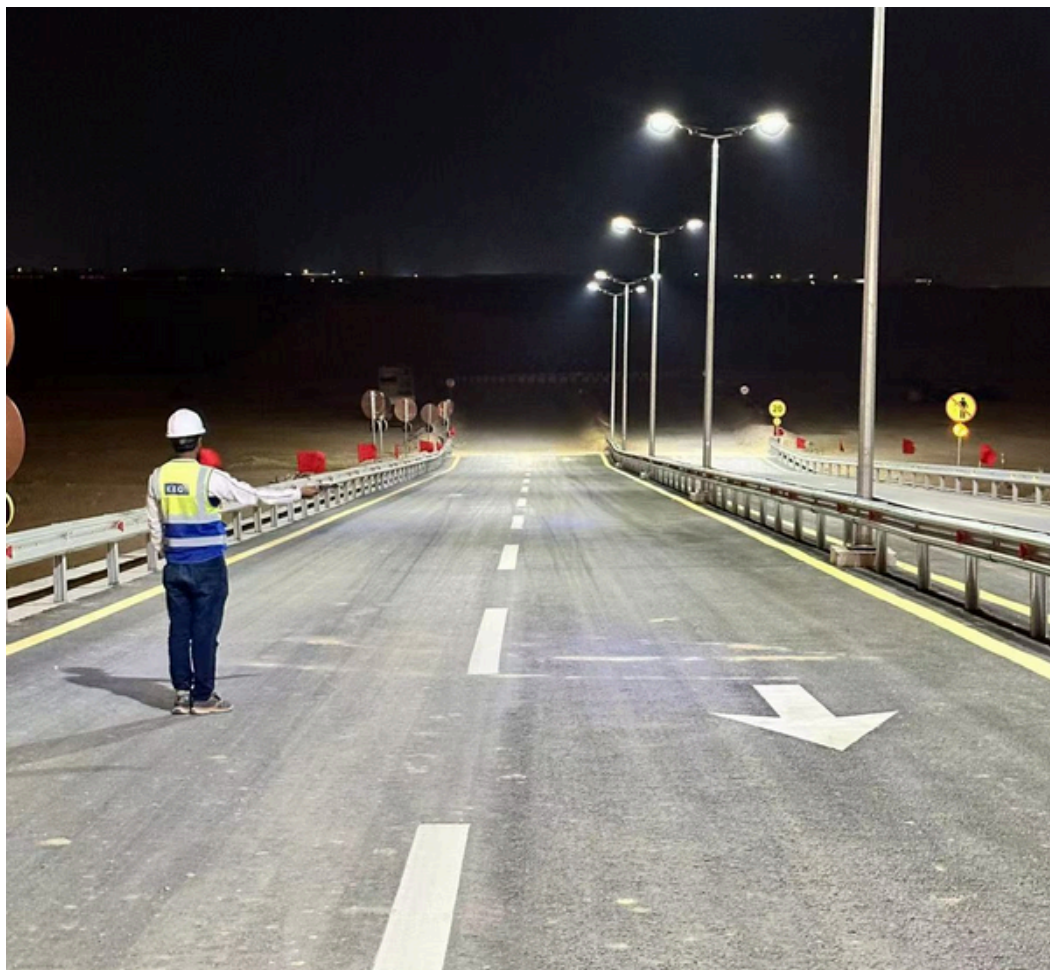
- Streets and roads
- Bike and walking tracks
- Residential and community areas
- Public car parks and areas
- Jetties, coastal areas, marinas, and docks

MILIO AIO Solar Street Light



Main Specification		
Model	AIO-30WM	AIO-50WM
Lighting Performance	30W 5,100lm	50W 7,800lm
Solar panel	60W 18V MONO	60W 18V MONO
LiFePO4 battery	12.8V 154WH	12.8V 384WH
CCT	2700K~6000K	•
Motion sensor	PIR / Microwave	•
Solar Controller	High Efficiency 97% MPPT	
Dimension	740*350*85mm	900*380*88mm
Installation size	60mm	•
Warranty	3 years	•





ZAIN

AIO Solar Street Light

ZAIN is the ideal solar lighting solution for outdoor applications, offering power options from 50W to 180W to suit pole heights between 5 and 14 metres. This latest compact solar street light integrates advanced lithium battery technology with high-efficiency LEDs, ensuring there's a perfect model for every project.

Applications

- Streets and roads
- Bike and walking tracks
- Residential and community areas
- Public car parks and areas
- Jetties, coastal areas, marinas, and docks

ZAIN 60W~180W AIO Solar Street Light



Main Specification

Power Range	60W / 80W / 100W / 120W / 140W / 160W / 180W
Luminous Efficiency	170lm/W
Solar panel	82W~196W MONO
Battery Capacity	384WH~1075WH 12.8V/25.6V
CCT	2200K~6500K
Motion sensor	PIR / Microwave
Solar Controller	High Efficiency 97% MPPT
Installation height	4m~14m
Installation size	60mm / 76mm optional
Warranty	5years





Omega - Plus

Integrated solar Street Lights

Designed and engineered in the USA, SATURN is a durable solar light with a robust casing to withstand extreme winds and salt corrosion. Its sleek design suits parking lots, residential areas, walkways, and coastal locations. With a hybrid solar and 220V power option, it delivers reliable, continuous lighting. Perfect for premium projects, SATURN combines advanced technology with elegant style.

Applications

- Streets and roads
- Bike and walking tracks
- Residential and community areas
- Public car parks and areas
- Jetties, coastal areas, marinas, and docks

OMEGA-Lux Cyclone Resistant Solar Street Light



Main Specification

Model	AIO-80WS	AIO-100WS
Lighting Performance	80W 13,600lm	100W 17,000lm
Solar panel	128W 18V MONO	•
LiFePO4 battery	12.8V 45AH	12.8V 60AH
CCT	2200K ~ 6000K	•
Solar Controller	High Efficiency 97% MPPT	•
Motion Sensor	PIR / Microwave Optional	•
Dimension	960*700*330mm	•
Installation size	76mm	•
Warranty	5 years	•



OMEGA-Plus Integrated Solar Street Lights



Main Specification

Model	OMEGA - Plus
Lighting Performance	30W~80W adjustable 170lm/W
Solar panel	128W 18V MONO
LiFePO4 battery	12.8V 60AH~120AH Max
Solar Controller	High Efficiency 97% MPPT
Mounting Height	6~10M
Motion Sensor	PIR / Microwave Optional
Dimension	960*700*330mm
Installation size	76mm
Warranty	3 years





Solar Bollard Lights

The Solar Bollard Light Series features high-quality lithium batteries for extended performance, encased in a durable, rugged design. Its innovative style enhances any landscape while being IDA-certified for reduced light pollution.

Ideal for residential gardens, parks, commercial landscapes, and public spaces, these lights offer a reliable, eco-friendly lighting solution that combines aesthetic appeal with enhanced outdoor safety.

Applications

- Parks and gardens
- Commercial landscapes
- Public spaces
- Walkways and pathways
- Car parks
- Resorts, hotels, and caravan parks
- Schools and universities



ECO- GLO47

Lighting Solar
panel LiFePO4
battery
Dimension

0.15W >5lm 0.8W
Nickel-Hydrogen
Ø 114mm x 900mm



ECO- GLO50

Lighting Solar
panel LiFePO4
battery
Dimension

1.5W >280lm
5V 6.2W MONO
3.2V 12AH



ECO- GLO50WM

Lighting Solar
panel LiFePO4
battery
Dimension

1.5W >280lm
5V 6.2W MONO
3.2V 12AH



ECO- GLO51

Lighting Solar
panel LiFePO4
battery
Dimension

1.5W >280lm
5V 6.2W MONO
3.2V 12AH





ECO-GLO52

*Lighting Solar
panel LiFePO4
battery
Dimension*

*1.5W >220lm 5V
6.2W MONO
3.2V 12AH*



ECO-GLO53

*Lighting Solar
panel LiFePO4
battery
Dimension*

*1.5W >280lm 5V
6.2W MONO
3.2V 12AH*



ECO-GLO54

*Lighting Solar
panel LiFePO4
battery
Dimension*

*3W >480lm 5V
9.2W MONO
3.2V 12AH*



ECO-GLO55PM

*Lighting Solar
panel LiFePO4
battery
Dimension*

*1.5W >280lm
5V 6.0W MONO
3.2V 12AH*





ATHENA

Solar Post Top Light

The Athena Solar Post Top Light delivers 360-degree glare-free illumination, powered entirely by solar energy for off-grid use. Its sleek and elegant design complements both home and hospitality settings, offering a stylish, cost-free lighting solution. Built-in lighting programs let you easily adjust power and runtime via remote control to suit your needs.

Applications

- Streets and roads
- Bike and walking tracks
- Residential and community areas
- Public car parks and areas
- Jetties, coastal areas, marinas, and docks

ATHENA Solar Post Top Light



Main Specification

Model	AI-GL600R
Lighting Performance	18W 2,800lm
Solar panel	42W 18V MONO
LiFePO4 battery	12.8V 154WH
CCT	3000K+4000K / 3000K+6000K
Motion sensor	Microwave
Solar Controller	High Efficiency 97% MPPT
Dimension	φ600*H455mm
Warranty	3 years





THEMIS

Solar Post Top Light

Featuring a futuristic design, THEMIS protects wildlife by minimising harmful blue light with a UGR <1%. It delivers smooth, pollution-free lighting at night. Equipped with a high-efficiency Mono solar panel, LiFePO4 battery, and solar charge controller, it achieves ultra-bright output up to 190 lm/W while using minimal power. It provides stable, continuous light even in low sunlight, with adjustable power and duration for optimal use. Ideal for gardens, parks, walkways, and bike lanes, THEMIS offers a maintenance-free lifespan of up to 10 years.

Applications

- Streets and roads
- Bike and walking tracks
- Residential and community areas
- Public car parks and areas
- Jetties, coastal areas, marinas, and docks

THEMIS Solar Post Top Light



Main Specification	
Model	AI-GL590R
Lighting Performance	18W 2,800lm
Solar panel	38W 18V MONO
LiFePO4 battery	12.8V 154WH
CCT	3000K+4000K / 3000K+6000K
Motion sensor	PIR
Solar Controller	High Efficiency 97% MPPT
Dimension	φ590*H550mm
Warranty	5 years





SkyBeam

Solar Lighting Pole

Our Solar Lighting Poles feature robust die-cast aluminium housings and a sleek, streamlined design, built for high-end projects. Equipped with high-power solar panels, large-capacity batteries, and MPPT controllers for efficient charging, they offer reliable performance. A remote control allows easy operation, and a 5-year warranty guarantees quality and durability. Ideal for parks, gardens, squares, walkways, and bike paths, these lights are perfect for premium projects and professional applications

Applications

- Streets and roads
- Bike and walking tracks
- Residential and community areas
- Public car parks and areas
- Jetties, coastal areas, marinas, and docks

SkyBeam Solar Lighting Pole



Main Specification

Models	SKYBEAM Series
Pole Height	3000 / 3800 / 4800 / 5800mm / customized
Lighting Performance	20W~100W 170lm/W
Solar Panel	140W~880W 18V/36V MONO
LiFePO4 Battery	460WH ~1536WH
Fixture color	Black / Gray / Customized
Motion sensor	PIR / Microwave
Solar Controller	High Efficiency 97% MPPT
Warranty	3 years





OMEGA - Lux

Cyclone-Resistant Solar Street Light

Designed and engineered in the USA, SATURN is a tough, high-performance solar light built to withstand extreme winds and salt corrosion. Its sleek design suits parking lots, residential areas, walkways, and coastal locations. Offering a hybrid solar and 220V power option, SATURN ensures reliable, uninterrupted lighting. Perfect for premium projects, it combines durability with modern style.

Applications

- Streets and roads
- Bike and walking tracks
- Residential and community areas
- Public car parks and areas
- Jetties, coastal areas, marinas, and docks



APOLLO

Solar Canopy Light

The Solar Batten Light is a compact, high-brightness indoor lighting solution built for long-lasting performance. It runs on a high-capacity lithium battery with an integrated controller and activates only when motion is detected.

With a remote control, users can customise operating times and power settings to maximise energy savings. Ideal for parking garages, warehouses, and other indoor spaces, it combines durable construction with smart energy management for a low-maintenance, reliable solution.

Applications

- Car park lighting
- Garage lighting
- Caravan lighting
- Bus station lighting
- Warehouse lighting
- Emergency lighting
- Camping lighting

APOLLO *Solar Canopy Light*



Main Specification

Model	AI-X2200	AI-X4200
Lighting Performance	18W 2,200lm	36W 4,200lm
Solar panel	18V 60W MONO	18V 80W MONO
LiFePO4 battery	12.8V 154WH	12.8V 307WH
CCT	3000K ~ 6000K	•
Motion sensor	Microwave	•
Solar Controller	Programmable PWM	•
Dimension	92*84*600mm	92*84*900mm
Warranty	3 years	•



Switch Button



VENUS

Solar Flood Light

The VENUS Series is a high-end solar LED floodlight designed for clients who demand quality and performance. It features Grade A LiFePO4 batteries, SST304 stainless steel screws, anti-corrosion powder coating, and a long-range 2.4G remote control. Packaged with premium materials and components, VENUS is perfect for quality-focused distribution and retail. OEM enquiries welcome.

Applications

- Garage lighting
- Caravan lighting
- Garden lighting
- Warehouse lighting
- Farm lighting
- Fence lighting
- Commercial lighting
- Emergency lighting

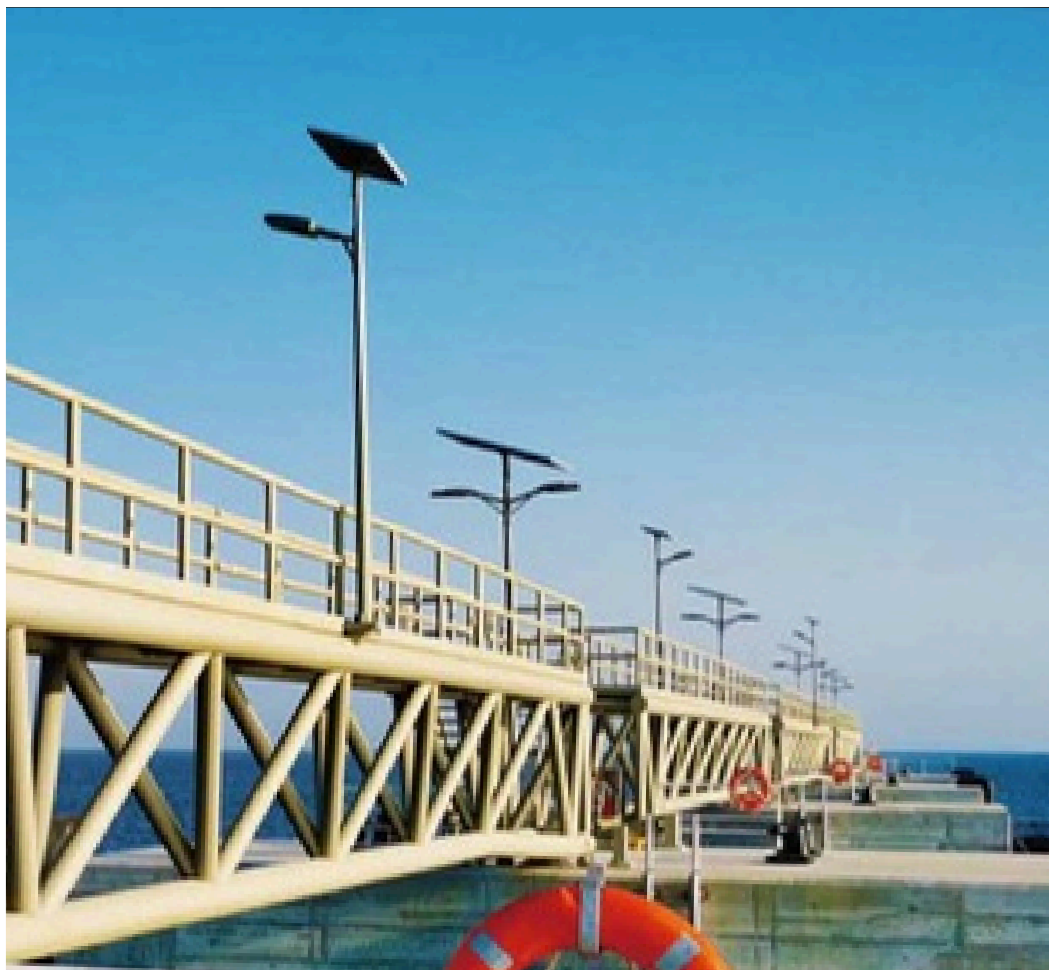
VENUS Solar Flood Light



Main Specification

Model	V2-PRO	V4-PRO	V6-PRO	V8-PRO
Lighting Performance	4.8W 880lm	9W 1,680lm	13.5W 2,480lm	18.5W 3,280lm
Solar panel	12W 10V MONO	25W 10V MONO	35W 10V MONO	50W 10V MONO
LiFePO4 battery	6.4V 38.4WH	6.4V 76.8WH	6.4V 115WH	6.4V 154WH
CCT	3000K-6000K or RGBCW	•	•	•
Motion sensor	Microwave	•	•	•
Remote type	2.4G	•	•	•
Dimension	240*168*56mm	305*235*56mm	375*275*56mm	375*275*56mm
Warranty	2 years	•	•	•





2in1 INTEGRATED

Solar Street Lights

All in Two Solar Street Lights are designed for commercial projects needing consistent, high-brightness lighting. Featuring brand-new LiFePO4 batteries, MPPT solar charge controllers, and the latest LED technology, they deliver up to 160 lm/W with no dimming. Suitable for poles up to 12 metres, the light head connects to the solar panel via universal MC4 plugs.

Three models are available:

- HELIOS: 20W, 30W, 50W
- HERMES: 60W, 80W
- THOR: 80W, 100W, 120W

All specs can be customised to meet client requirements.

Applications

- Streets and roads
- Bike and walking tracks
- Residential and community areas
- Public car parks and areas
- Jetties, coastal areas, marinas, and docks
- Mining and industrial sites



HELIOS 2in1 Solar Street Light



Main Specification

Model	HELIOS T3	HELIOS T5
Lighting Performance	30W 5,100lm	50W 7,500lm
Solar panel	80W 18V MONO	100W 18V MONO
LiFePO4 battery	307WH 12.8V	460WH 12.8V
CCT	3000K ~ 6000K	•
Beam Angle	Type I / II / III	•
Solar Controller	High Efficiency 97% MPPT	
Dimension	610*265*98mm	•
Warranty	3 years	•



HERMES 2 in 1 Solar Street Light



Main Specification

Model	HERMES T6	HERMES T8
Lighting Performance	60W 10,200lm	80W 13,600lm
Solar panel	120W 18V MONO	160W 18V MONO
LiFePO4 battery	538WH 12.8V	768WH 25.6V
CCT	3000K ~ 6000K	•
Beam Angle	Type I / II / III	•
Solar Controller	High Efficiency 97% MPPT	
Dimension	675*277*109mm	•
Warranty	3 years	•

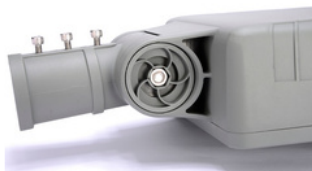


THOR 2 in 1 Solar Street Light



Main Specification

Model	THOR T10	THOR T12
Lighting Performance	100W 16,800lm	120W 20,400lm
Solar panel	200W 36V MONO	260W 36V MONO
LiFePO4 battery	921WH 25.6V	1075WH 25.6V
CCT	3000K ~ 6000K	•
Beam Angle	Type I / II / III	•
Solar Controller	High Efficiency 97% MPPT	
Dimension	800*310*116mm	•
Warranty	3 years	•





Vertical Solar Module

140W | 200W

SolarWrap is a premium pole-mounted solar solution, combining high efficiency with a sleek, patented design—ideal for decorative and high-end applications.

Its hexagonal die-cast aluminium structure houses high-efficiency solar modules, delivering strength, performance, and durability. Lightweight and removable, it allows for easy installation and maintenance-free operation.

Compatible with any pole shape or size, SolarWrap is perfect for outdoor monitors, traffic lights, signal centres, and street lighting—offering a cost-effective way to upgrade existing poles to solar.

Applications

- Solar street lighting
- Solar post lighting
- Solar CCTV systems
- Solar traffic systems
- Other pole-mounted designs

Vertical Solar Module 140W | 200W



Main Specification

Model	Q140	Q200
Specification	140W 18V/36V MONO	200W 18V/36V MONO
Dimension	228*200*1560mm	228*200*2060mm
Pole diameter	75~145mm	•
Cell efficiency	22.5%	•
Structure material	UPVC + aluminum alloy / aluminum alloy	
Lifetime	>20 years lifetime	
Warranty	5 years	





Vertical Solar Tube

80W | 100W | 140W

Designed in the U.S.A. the SolarWrap vertical solar cylinder offers an innovative solution for pole-mounted applications. Unlike conventional solar panels, SolarWrap enhances the aesthetic of traditional poles, blending seamlessly into both natural and urban environments. Its sleek, integrated design makes it ideal for a range of uses, including solar light poles, solar camera poles, and solar traffic signs.

Applications

- Solar street lighting
- Solar post lighting
- Solar CCTV systems
- Solar traffic systems
- Other pole-mounted designs

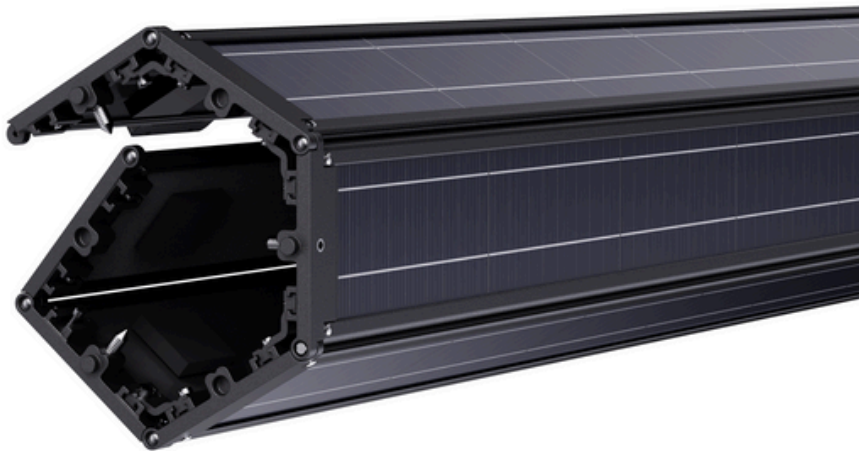
Vertical solar tube 80W | 100W | 140W



Main Specification

Model	S80	S100	S140
Specification	80W 6V MONO	100W 6V MONO	140W 9V MONO
Dimension	D160*1040mm	D190*1040mm	D240*1040mm
Pole diameter	60~110mm	80~140mm	100~180mm
Cell efficiency	22.5%	•	•
Structure material	Tempered glass + aluminium alloy profile		•
Lifetime	>20 years lifetime	•	•
Warranty	5 years	•	•





GeoFlex

Scalable | Foldable | Linkable

The GeoFlex Series features a foldable polygonal solar panel design, adaptable to shapes like hexagons or octagons for flexible power output. Its compact structure reduces packaging size and expands to meet higher energy needs, with 360-degree charging for maximum solar exposure. The vertical cylindrical panels offer excellent wind resistance, prevent snow build-up, and deliver a sleek, urban-friendly look. Ideal for solar streetlights, surveillance systems, and traffic signals, the GeoFlex Series blends efficiency, durability, and modern design for seamless urban integration.

Applications

- Solar street lighting
- Solar post lighting
- Solar CCTV systems
- Solar traffic systems
- Other pole-mounted designs

GeoFlex Series Polygonal Photovoltaic Module



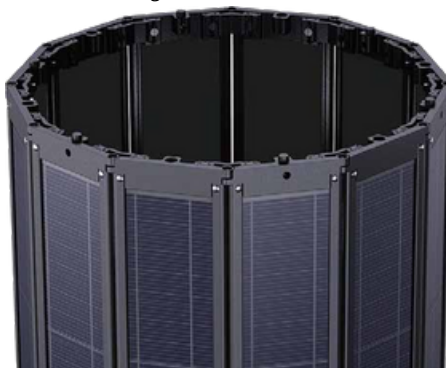
Hexagon



Octagon



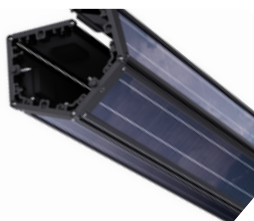
Decagon



Dodecagon

Main Specification

Models	GeoFlex Series
Specification	150W~420W 18V/36V MONO
Length	1060mm / 1560mm
Pole diameter	120mm~330mm
Cell efficiency	23.2%
Materials	Tempered Glass + Aluminium Profile
Lifetime	>20 years lifetime
Warranty	5 years





Lithium Battery

Built into Poles | Outside of Poles

The E&K Series Lithium Battery Pack is a compact, high-performance solution for outdoor lighting and versatile applications. Designed to fit inside lamp poles, it's perfect for solar streetlights, surveillance systems, and advertising displays.

With a durable aluminium alloy casing and IP67 waterproof rating, it's built to endure harsh conditions. Customisable capacity ensures it meets a range of energy needs, offering reliable, efficient power where it's needed most.

Applications

- Solar LED street lighting
- Solar garden lighting
- Solar CCTV systems
- Solar traffic light systems
- Portable battery storage systems
- Household power energy

Lithium Battery



Main Specification

Battery Cell	6000mAh 3.2V 32700	15000mAh 3.2V 32140
Nominal Capacity	12.8V/25.6V 36AH~90AH	12.8V/25.6V 60AH~90AH
Charge Mode	C.C + C.V	•
Operating Temperature	-15°C ~ +65°C	•
Lifetime (D.O.D. 60%)	4,000 cycles	•
Warranty	3 Years	•





solar made easy



Servicing Australia Wide | Head Office
Factory 2/1 Access Way, Carrum Downs VIC 3201

e.info@sdastackers.com.au w.ecosolarlighting.com.au