



ECO-GLO50



**DARKSKY
APPROVED**

Reduces light pollution
Certified by DarkSky.org

SOLAR BOLLARD LIGHT
SOLAR WALL LIGHT





**DARKSKY
APPROVED**

Reduces light pollution
Certified by DarkSky.org

Designed for Nature



**DARKSKY
APPROVED**

Reduces light pollution
Certified by DarkSky.org



ECO-GLO50

Solar Bollard Light
Solar Wall Light

- IK10 Vandal Resistant
- Motion Sensor
- Hidden base design
- Dark Sky Friendly

The ECO-GLO50 solar bollard light offers a futuristic design with a five-year warranty for public space outdoor lighting applications where the benefits of IK10 vandal resistance are required. The 6.2W solar panel is protected by a polycarbonate cover exceeding IK10 vandal-resistant performance.

The newly designed, high-capacity 38.4WH LifePO4 battery combined with an intelligent lighting program provides 100% lighting output of up to 280 lumens for four hours before changing to a dimming program of 25% for full production to 100% when the PIR sensor is triggered. This program ensures up to four nights of lighting on a single full charge of the battery.

The mission of the ECO-GLO50 solar bollard is to comply with the requirement of the Dark Sky Association by limiting the upward light wasted ratio UWLR to <1%. Limiting upward light reduces environmental light pollution and protects the view of our night sky for all.

Light Performance

Product name	ECO-GLO50
Lighting	1.2W 280lm SMD3030 24pcs
Light head diameter	275mm
Fixture material	Aluminium die casting + PC + tempered Glass
Fixture color	Black RAL9011 Anthracite grey RAL 7016
CRI	>82
IP & IK rate	IP65 & IK10
CCT range	2200K ~ 6000K
Beam angle	120 degree

LifePO4 Battery

Battery type	Brand new LifePO4 32700 6000mA 3.2V
Battery capacity	38.4WH 3.2V
Battery lifetime	6000 cycles @ D.O.D 80%
Charge & Discharge time	4.5 hours & >36 hours
Working temp.	-15 °C ~ 70 °C
Battery autonomy	3 - 4 days with motion sensor

Solar Panel

Peak Power	6.2W
Rated Voltage	5V
Cell Type	MONO crystallinesilicion
Cell Efficiency (%)	>22.5%
Lifetime	>20 years

Control System

Control method	Automatic dusk to dawn
Working mode	4H 100% + 13H 25% with 100% when sensor is triggered
Max PV power	20W
Max load power	5W
Sensor type	PIR motion sensor
System voltage	3.2V
Detection distance	8 meters max
Detection angle	120 degree
Working temp.	-15 °C ~ 70 °C

Package

Model number	ECO-GLO50
Light dimension	φ275 * H900mm
Light head package	280*280*220mm
Pillar package	115*115*690mm
N.W / G.W (one set)	5.70KG / 6.40KG



Solar Bollard Light

Model number	ECO-GLO50W
Dimension	323*275*195mm
Carton dimension	350*590*430mm
Qty/CTN	4pcs/CTN
N.W / G.W (per CTN)	12.80KG / 14.50KG



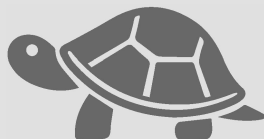
Solar Wall Light

Remark : CCT of 3000 K or lower is required for IDA certification compliance.

Product Features



IK10 vandal resistant
for outdoor lighting



Wild animals friendly
without lighting pollution



Hidden base with inner
screw more elegant & neat
finishing



36 hours backup
with fully charged battery



LED power is
automatically adjusted to
save energy.



High luminous flux
output up to 280lm



LiFePO4 battery more
than 10 years lifetime



Equipped PIR motion
sensor to save energy



Dusk to Dawn
automatically ON/OFF

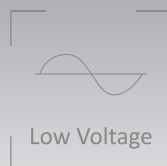


**DARKSKY
APPROVED**

Reduces light pollution
Certified by DarkSky.org



Unit : mm



Low Voltage



IP65



IK10



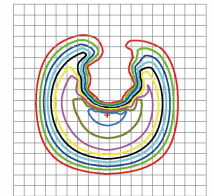
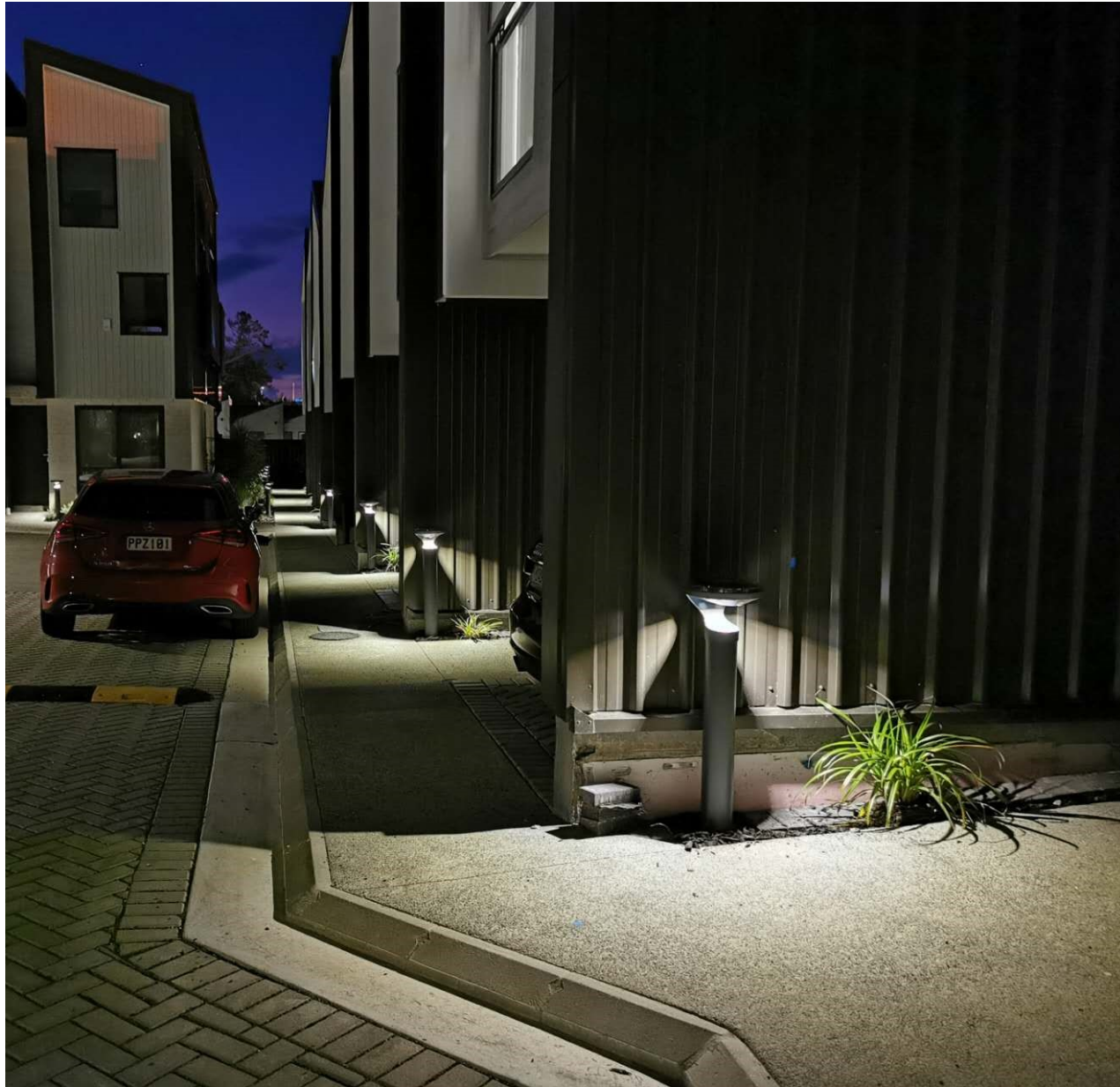
50000
HOURS



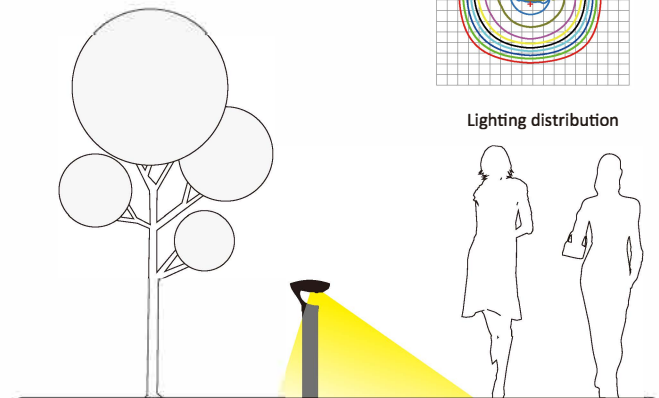
-15 C ~ 70 C



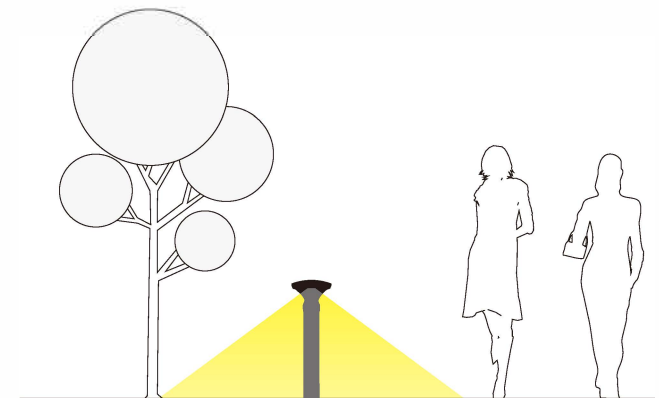
10%~90%



Lighting distribution



Side view



Front view



Installation with invisible Screws

The ECO-GLO50 solar bollard adopts a compact design structure, with a simple installation and clean finish.

The connection between the lamp head, the lamp pole, and the lamp base adopts a threaded design. Which is fixed by a screw to prevent theft.

The base is held down by 4 x expansion screws, once the body is threaded onto the base, the screws become invisible giving the appearance of the bollard being installed into the ground.

